



Technical Parameters 技术参数

Model 型号	Dimension 尺寸 (mm)	Weight 重量	Material 材质
XB-SMCMH-0001	545x545x455	27KG	SMC
XB-SMCMH-0002	873x578x618	93.6KG	SMC
XB-SMCMH-0003	710x710x800	124KG	SMC

Copper Cable Wiring Module 铜缆接线模块

General Description 概述

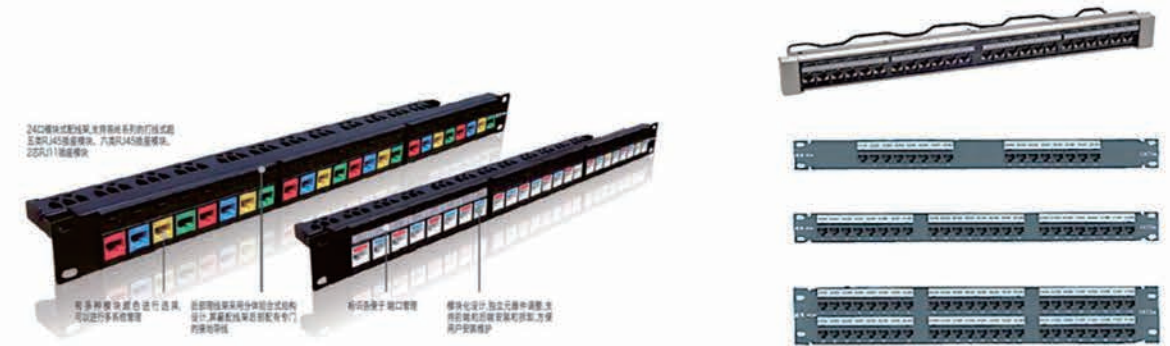
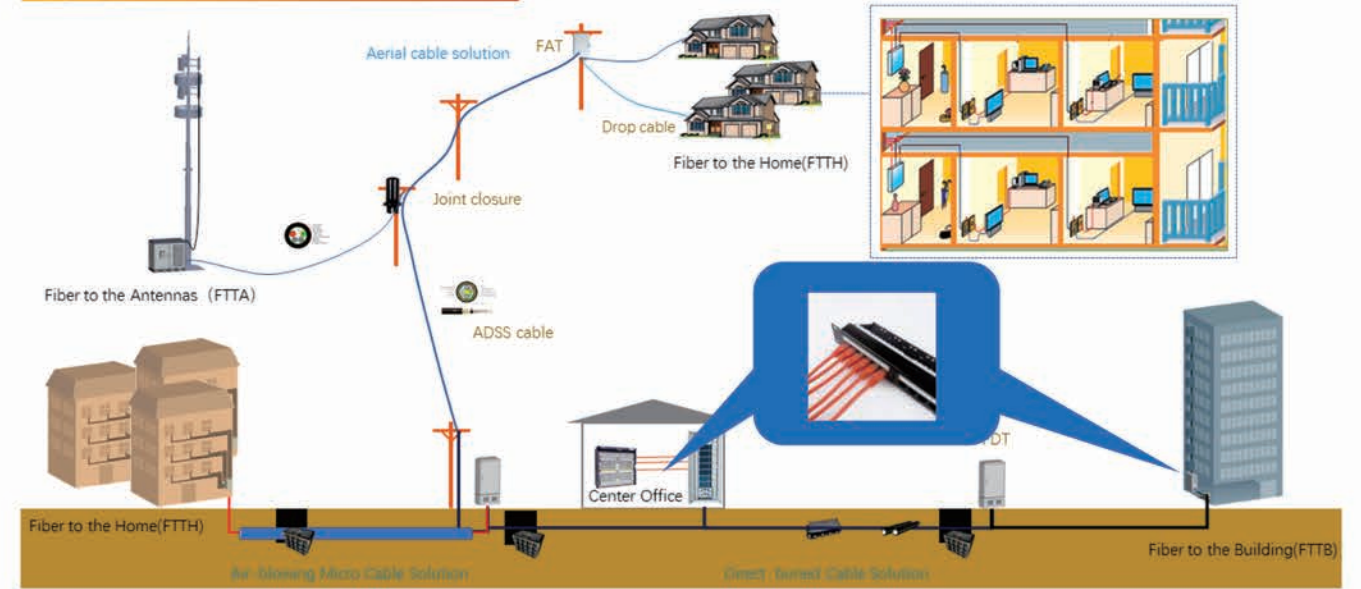
According to ANSI/TIA 568-C standard, the distribution frame refers to "Patch Panel". Distribution frame is the most important component in the management subsystem, and it is the pivot component to realize the cross connection and conversion of vertical trunk and horizontal wiring subsystems. According to the different installation position, the distribution frame can be divided into rack type and wall mounted type; Copper cable distribution frame can be divided into UTP, FTP, coaxial cable, audio and video distribution frame and so on; According to the different structure is divided into modular and integrated; According to use place, use different, divide for total distribution frame and intermediate distribution frame again.

根据ANSI/TIA 568-C标准,配线架是指"Patch Panel"。配线架是管理子系统中最重要的部件,是实现垂直干线和水平布线子系统交叉连接和转换的枢纽部件。根据安装位置的不同,配线架可分为机架式和壁挂式;铜缆配线架可分为UTP、FTP、同轴电缆、音视频配线架等;根据结构不同分为模块化和集成化;根据使用场所、用途的不同,又分为总配线架和中间配线架。

Features 特征

- Distribution frame adopts modular design, can be installed independent RJ45 module
配线架采用模块化设计,可安装独立的RJ45模块
- Has five classes of shielding, ultra five month shadowing, six types of shielding, six classes a variety of types such as shield and six super class screen.
配线架采用模块化设计,可安装独立的RJ45模块
- Distribution frame adopts modular design, can be installed independent RJ45 module
拥有五级屏蔽、超五级遮蔽、六级屏蔽和六级超屏等多种类型。
- Electrical distribution frame properties conform to ISO 11801 / EC, TIA/EIA 568-C standard requirement.
配线架性能符合ISO 11801/EC、TIA/EIA 568-C标准要求。
- Distribution frame of 19-inch installation
19寸配线架安装
- Cable distribution frame at the back of the cable support, help management.
线缆支架背面的线缆配线架,便于管理。

Application Scenario 应用场景



Technical Parameters 技术参数

Model 型号	Dimension 尺寸	Capacity Ports 容量端口	Material 材质
XB-CSDM-0001	19"	8/16/24/48	metal

Copper Cable Wiring Assembly 铜缆接线组件

General Description 概述

Crystal head is a plastic connector that can be inserted in a fixed direction and automatically prevent falling off. It is commonly known as "crystal head", and the professional term is RJ-45 connector (RJ-45 is a kind of network interface specification, similar to RJ-11 interface, which is used for connecting telephone lines). The crystal head is suitable for field connection between equipment or horizontal subsystems. The shell is made of high density polyethylene. Both ends of each twisted-pair wire are connected to the network card and hub (or switch) by mounting crystal heads.

水晶头是一种塑料接头,可以固定方向插入,自动防止脱落。俗称"水晶头",专业术语是RJ-45连接器(RJ-45是一种网络接口规格,类似于RJ-11接口,用于连接电话线)。水晶头适用于设备或水平子系统之间的现场连接。外壳由高密度聚乙烯制成。每根双绞线的两端通过安装水晶头连接到网卡和集线器(或交换机)。